

Open the Gate! Come Through the Gate!

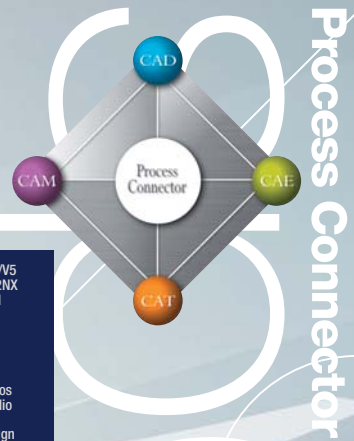
The Process Connector which translates a variety of 3D CAD models and formats

The concept of a process connector was considered as an evolved type of a data translator, in order to connect four big processes of design, analysis, manufacturing, and inspection in the industry process. The relation of digitized data can be expressed by arranging each process on the four peaks, expressing in the form of a diamond. Armonicos thought that smooth data transfer could be performed between the processes which became entangled intricately by arranging the function of a process connector in the center of the digital diamond.

Process Connector

SpGate®

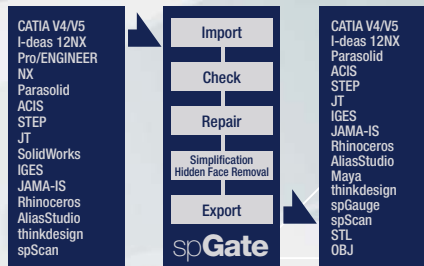
Process connector <spGate> - The evolved type of a data translator



Process Connector

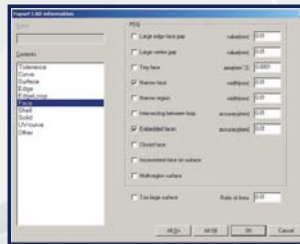
Multi Translator for 3D CAD Models

spGate is the all-in-one solution for reading and writing a wide variety of 3D CAD data. Model files can be imported, analyzed, repaired and exported for use in many commonly used CAD systems. spGate provides a number of options for controlling precisely how data is written and read, such as setting export file version information and JAMA-IS compliancy.



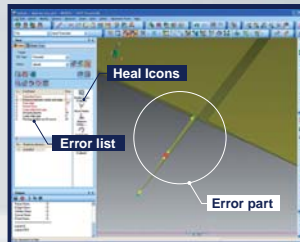
PDQ Verification Tool

For users wishing to check data against JAMA/JAPIA's PDQ (Product Data Quality) Guidelines, spGate comes with a fully featured PDQ verification tool. By manipulating the various check criteria, analysis can be performed for a specific data's needs and the criteria saved for use in future translations.



Healing & Repair

spGate includes effective, automated routines for healing many types for CAD data errors. However, some cases arise where user intervention is required in order to properly repair the error. In these situations, spGate delivers a multitude of easy to use commands that allow errors to be address manually by the user.



Simplification Functions

These functions assist with the removal of fillets and chamfers from a model, while reconstructing topology as needed. Using either automatic or manual fillet recognition/selection, spGate can automatically delete fillet surfaces. By grouping multiple fillets, spGate can even remove more complex fillet surface structures.



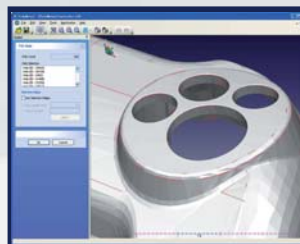
Hidden Face Removal

Models containing thousands and thousands of surfaces can take a significant time to render and affect every area of application performance. With the Hidden Surface Removal tool, faces can be removed from a model by utilizing user defined directional vectors. Any faces which are not viewable from these directions will not be rendered. This utility can delete 10,000 faces in a matter of seconds, thus greatly improving application performance. The same tool can also be used to create data consisting of only the outermost surfaces of a model, removing any sensitive and classified information from a model's interior.



Polygon Editor - PolyMend

PolyMend is a general purpose polygon mesh viewer and repair utility. Polygon data from analysis sources, manufacturing STL data, CG applications, and various non-contact measurement machines can be viewed and healed using a simple and intuitive user interface.



[Additional Information]

U R L : <http://www.armonicos.co.jp/english/products/spgate/>
E-Mail : spgate@armonicos.co.jp
T e l : 81-53-459-1005

• For the latest import and export specifications please visit <http://www.armonicos.co.jp/english/products/spgate/fc-io.html>

The contents indicated by this brochure may be changed without preliminary announcement.
This system was developed in part through the Association for the Promotion of Information Processing, with the aim of developing and propagating specialized software programs.
Other company names and products are the trademarks or registered trademarks of each company.
June 2008



[Development]
Armonicos Co.,Ltd.
Hamamatsu Act Tower 21st floor, 111-2 Itaya-machi, Nana-ku,
Hamamatsu City, Shizuoka Prefecture 430-7721 Japan
TEL 81-53-459-1000, FAX 81-53-459-1155
<http://www.armonicos.co.jp/english/>