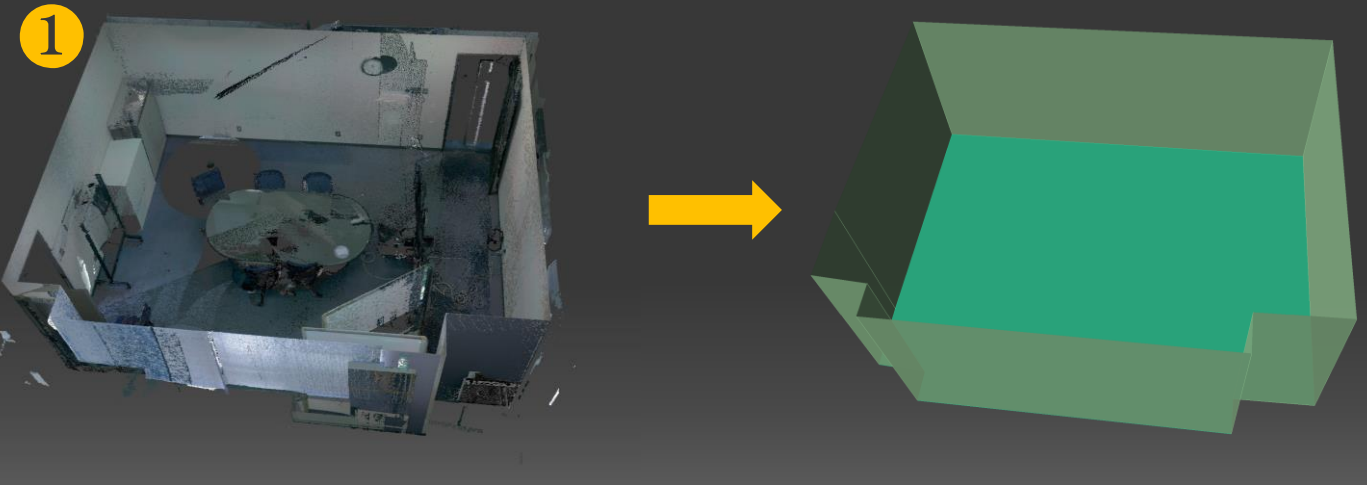


# ClassNK-PEERLESS ver. 2024.1 Release News



New!

## 1 Room creation

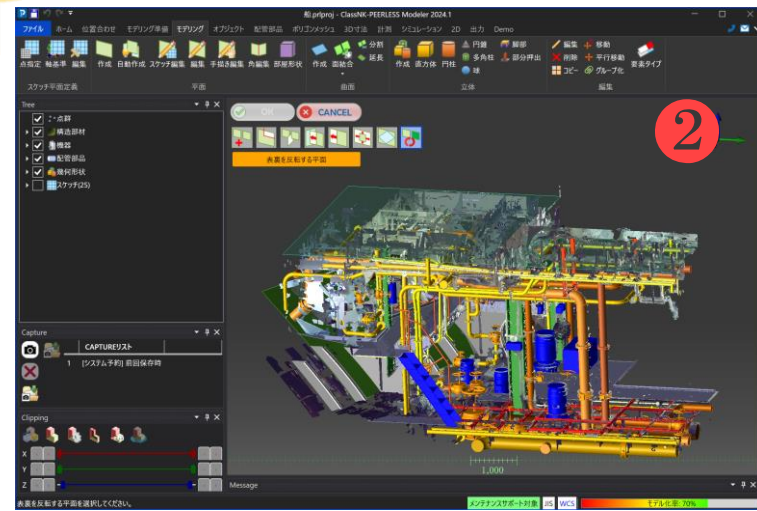
Room creation is released. It creates planes that shaped room automatically. By using this function, it enables to create room shape first and, add detailed modeling. It is useful to create BIM model.

Improved

## 2 UI

Dark mode UI is officially released. And some commands are merged as a tool for user-friendly

| X        | Y        | Z       | Intensity | R   | G   | B   |
|----------|----------|---------|-----------|-----|-----|-----|
| -13.6777 | -31.2406 | -7.4104 | 136       | 129 | 137 | 185 |
| -13.6987 | -30.8997 | -7.4393 | 90        | 72  | 58  | 219 |
| -13.6829 | -31.1074 | -7.266  | 163       | 163 | 173 | 204 |
| -13.6973 | -30.8314 | -7.6005 | 159       | 153 | 153 | 193 |
| -13.6888 | -31.1347 | -7.4989 | 108       | 79  | 49  | 214 |
| -13.6843 | -31.1918 | -7.3207 | 110       | 85  | 63  | 222 |
| -13.6915 | -31.1634 | -7.7355 | 84        | 57  | 38  | 217 |
| -13.6888 | -31.1564 | -7.6287 | 105       | 71  | 43  | 219 |
| -13.7033 | -30.7269 | -7.3957 | 145       | 140 | 144 | 190 |
| -13.6797 | -31.1438 | -7.2113 | 123       | 125 | 137 | 176 |



Demo feature

## 3 Import Point cloud data with Plane Rectangular Coordinate System

It enables to switch X coordinate and Y coordinate, when importing point cloud (asc or text format) with "Plane Rectangular Coordinate System".