

spScan 2016.1

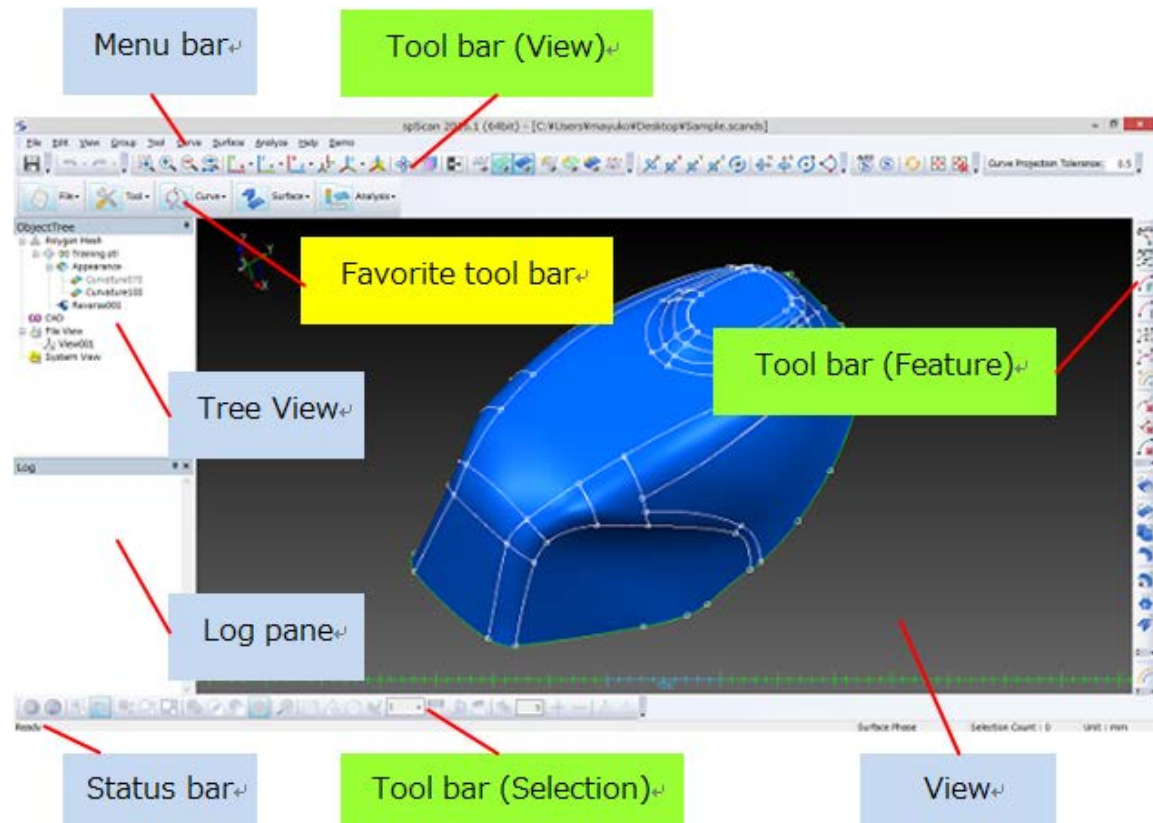
Upgrade News

2016/04

[spScan 2016.1.0]

User Interface Improvement and Technical Term Unification

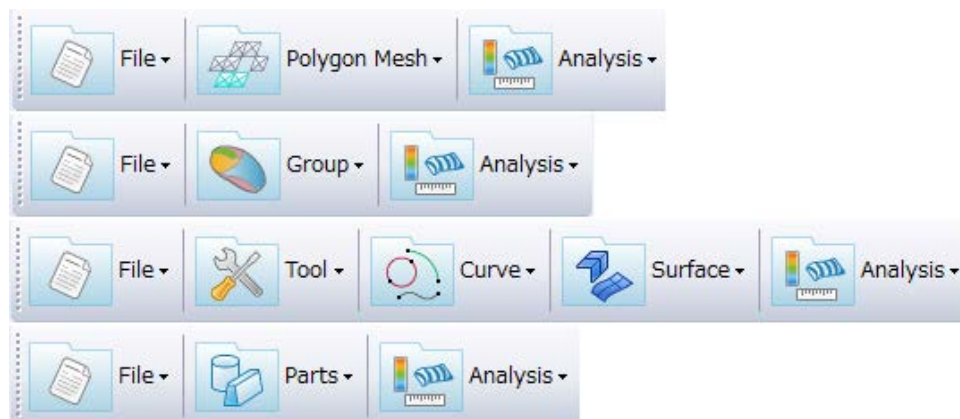
The design of the menu bar, toolbar and icons was improved. The improved features are shown below.



Favorite Tool Bar

- The favorite tool bar, which is the feature of the spGauge, was introduced to the spScan.

[Polygon Phase / Grouping Phase / Surface Phase / Modeling Phase]



- This feature helps you to customize the menus, allowing quick access to the frequently-used menus.
- Each button in the tool bar can be shown/hidden.

Changed menu names and icon designs

- Some menu names and the icon design were changed.

General

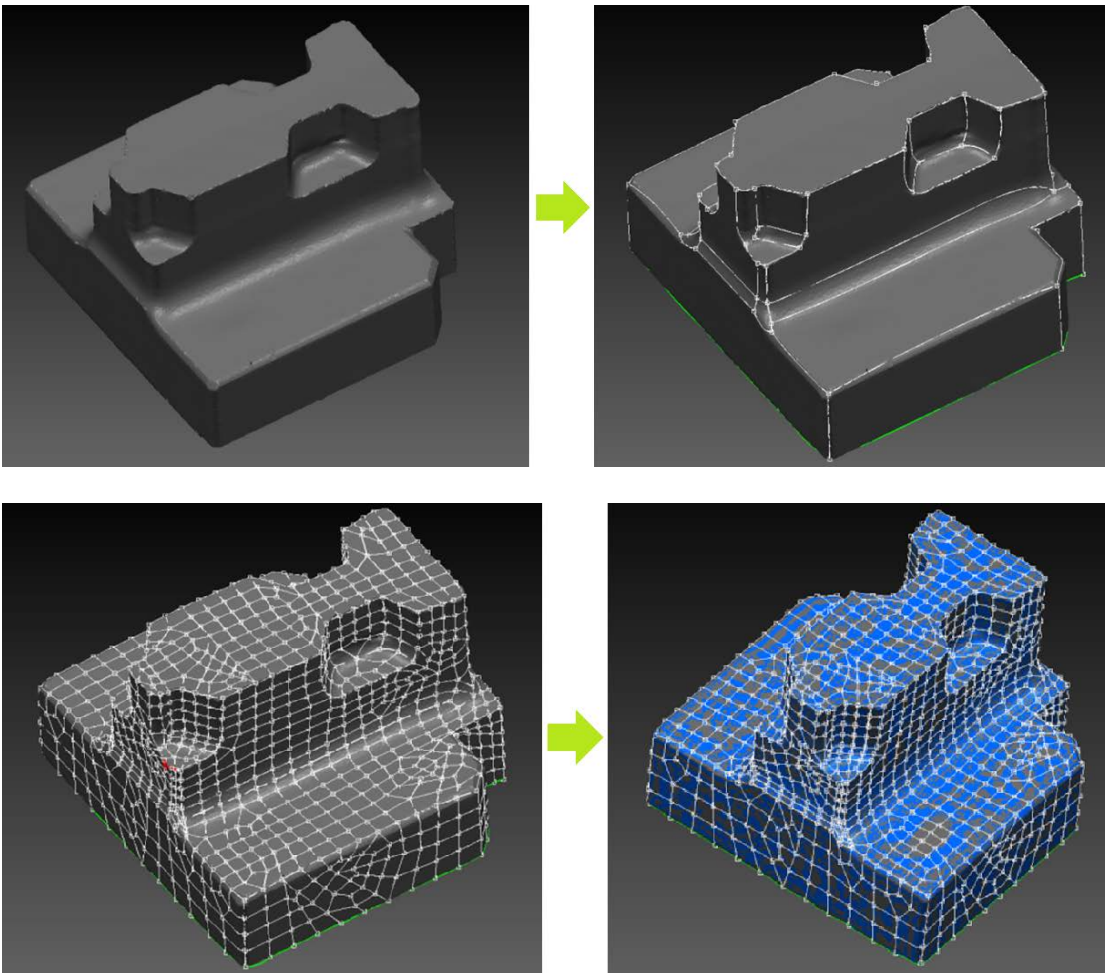
Supported OS change

Windows 8.1 is officially supported in this version. Windows XP and Windows VISTA are now outside of the scope of operation guarantee.

New Features

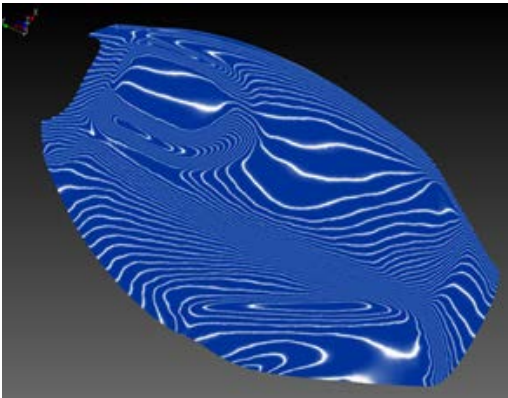
[Surface]-[Patch]

The overall patch creation feature was renewed while employing the editing and checking functions. With this new feature, reverse engineering beginners can easily create patch surfaces with minimum errors.



[Demo]-[Analyze] -[Zebra Mapping (Polygon Mesh)]

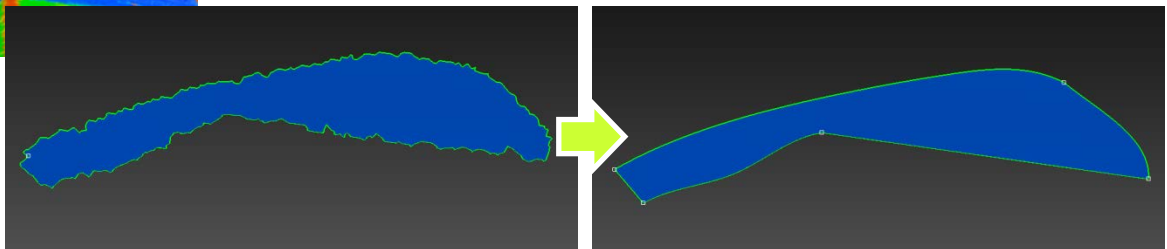
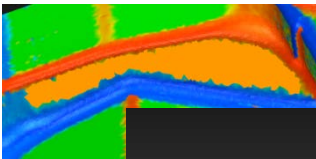
The zebra map display is now possible for polygons.



Improved Features

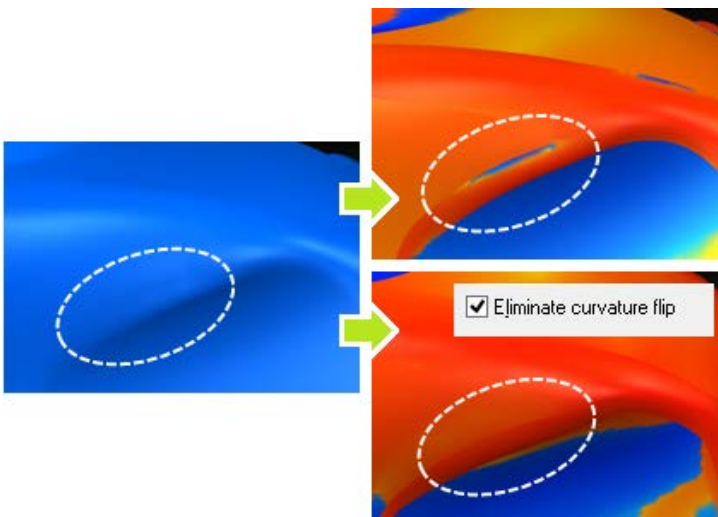
[Curve]- [Auto Edit Curve]

The function that edits curves automatically according to the curvature was added. Curves of a high quality can be created automatically compared to the existing deformation function.



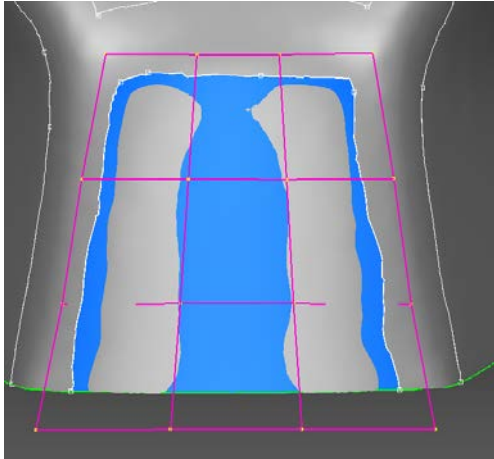
[Surface]- [Create Fillet Surface]

This new option prevents inversion of the curvature of the section line. This function makes it easy to create fillets of a high quality.



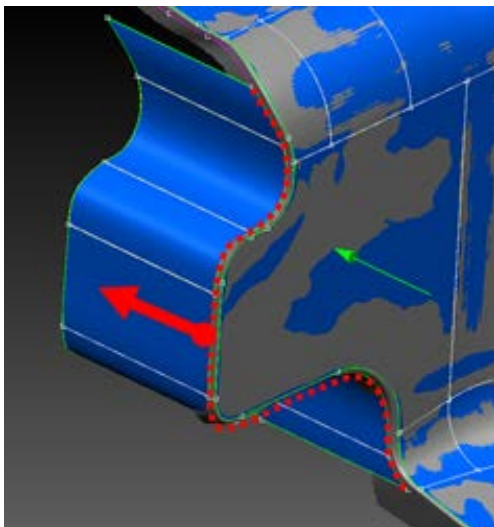
[Surface]-[Create Surface]

- Base surfaces in wedge shapes can be created.



[Demo]-[Create Surface]-[Extrude Surface]

- You can choose the direction in which surfaces are extruded.
- The method to specify the extrusion direction was extended. You can get the extrusion direction from existing elements.



Developer

Armonicos Co., Ltd.

Hamamatsu ACT Tower 21st floor, 111-2 Itaya-machi, Naka-ku,
Hamamatsu City, Shizuoka Prefecture 430-7721 Japan TEL: (+81)53-459-1000 FAX: (+81)53-459-1155

E-mail : spscan@armonicos.co.jp

- The copyright of this product as well as this documentation belongs to Armonicos Co., Ltd.
- This product and documentation can be used only under management of a registrant based on the software licensing agreement of this product.
- No copy, duplication, reproduction of part or all of this product and documentation shall be made without the consent of Armonicos Co., Ltd.
- The contents indicated by the specification of this product and the documentation may be changed without a prior notice.
- All company names and product names in this product and documentation are trademarks or registered trademarks of their respective companies.
- Compliance with Applicable Laws regarding Exports: Please do not use the product, or related information, technologies and materials, or goods and services made from the product, or related information, technologies (collectively, "Products") for the following purposes.
 1. Exporting the Products from Japan (including taking the Products out of Japan, indirectly exporting the Products through trading agencies, and disclosing the Products to non-residents in Japan) to a person who intends or is likely to intend to use the Products for developing, manufacturing, using or storing (collectively, "Development") nuclear weapons, biological weapons, chemical weapons or missiles (collectively, "Weapons of Mass Destruction" or "WMD") or other military purposes.
 2. Using the Products yourself for the purpose of Developing WMD or for other military purposes, or providing the Products to a person who have such purposes outside of Japan.